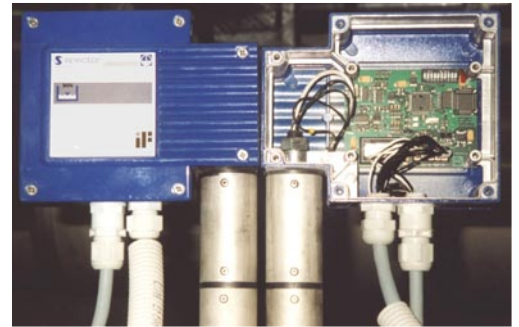


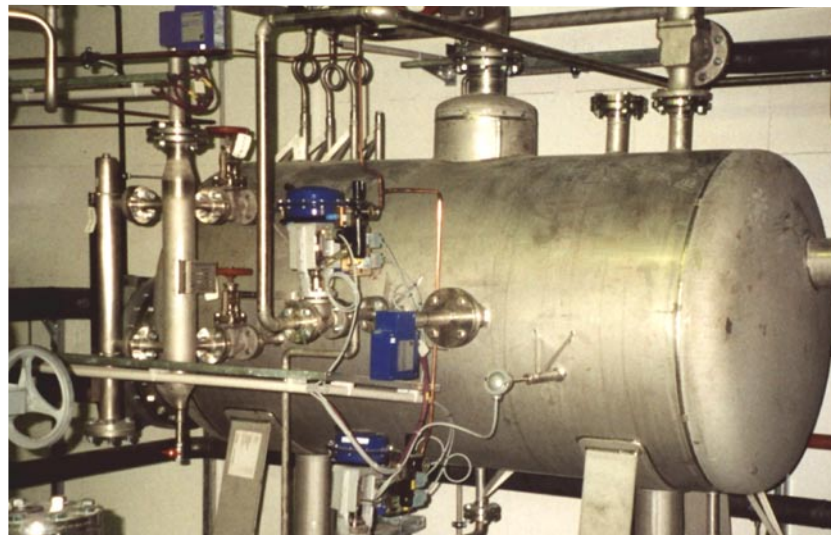
Successful Implementation of SPECTORbus at Jena Clinic

For sterilization and HVAC (heating, ventilation & air-conditioning) purposes, the implementation of a GESTRA pure steam generator and a standard steam installation (made of grey cast iron) was planned by the hospital complex of the Friedrich Schiller University in Jena. In addition, these plants were to be monitored by a building services control system.

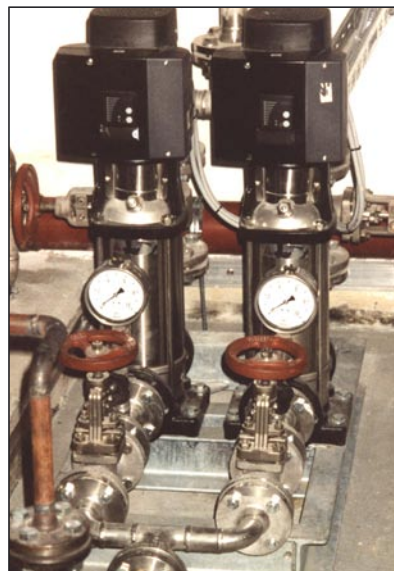
To be able to meet the requirements, we equipped both installations with SPECTORbus components. The pure steam generator is controlled by a Siemens S7-300, with a CANbus master by the company Helmholtz handling the communication amongst the CANbus subscribers. It has the casing form of an S7 assembly and can therefore be easily integrated into



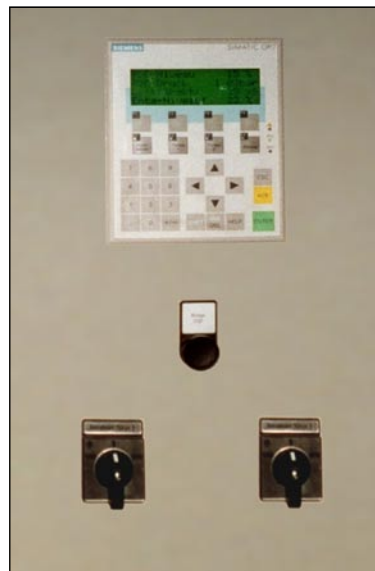
GESTRA SPECTORbus level electrodes



GESTRA pure steam generator



Speed-controlled feedwater pumps



Control unit at the control cabinet

the control module. The link to the building services control system and the standard steam installation is effected by a Profibus-FMS coupling.

By using a control terminal with 4-line text display, it is now possible to control the pure steam generator, to parametrize it and to analyse any malfunctions with the aid of detailed messages. In total, 124 data points are available for the building services control system.

The conventional control of the standard steam installation was upgraded through an S7 controller with CANbus and Profibus couplers. This now provides data from the CANbus as well as the digital and analog inputs for the building services control system with 64 data points.

Thanks to the use of SPECTORbus technology, considerable savings in installation costs were achieved. The controllers used for level, pressure and continuous blow-down all have the same user interface. In comparison to having different individual controllers, this significantly reduces the workload for the operating staff. All items of information are unambiguous, because they are shown in clear text form. Malfunctions are immediately detected by the building services control system, enabling the service personnel to react without delay.

GESTRA - the steam experts

Interested? Ask our Mr. Wolfgang Goltz, GESTRA Customer Service
Tel. +49 421 3503-524, <mailto:wgoltz@flowserve.com>

GESTRA is a global leader in the design and production of valves and control systems for heat and process fluid control. Being a member of the Flowserve Corporation, we are capable of offering our customers complete and intelligent solutions engineered to function with maximum reliability. Our products and services have many practical applications and are employed where

- steam is generated, distributed or used
- fluids flow
- energy saving is possible
- environmental protection and safety-oriented control systems are needed.

Visit us at <http://www.gestra.de>

or click to connect: gestra.today@flowserve.com

- want to subscribe to the e-mail distribution list
 - know someone who wants to subscribe to the e-mail distribution list
 - want to unsubscribe from the distribution list
 - want to submit an article
 - have any questions
-